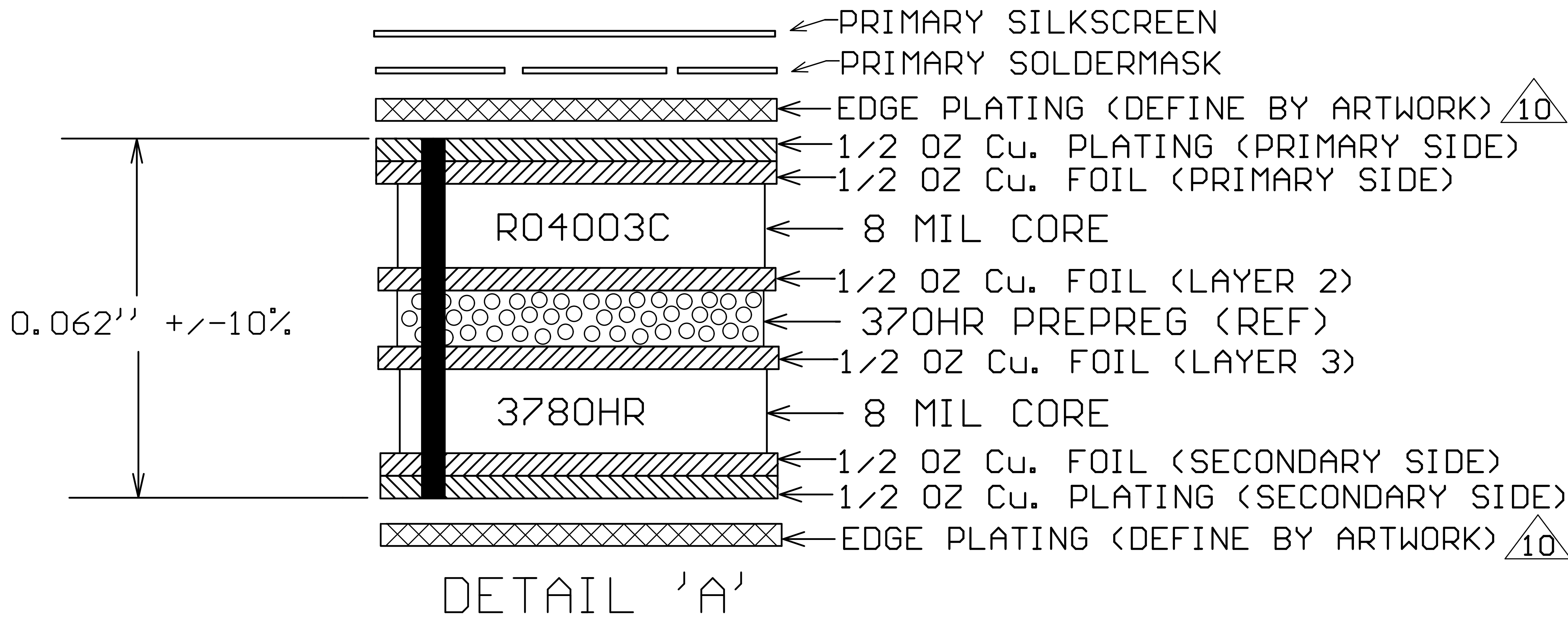


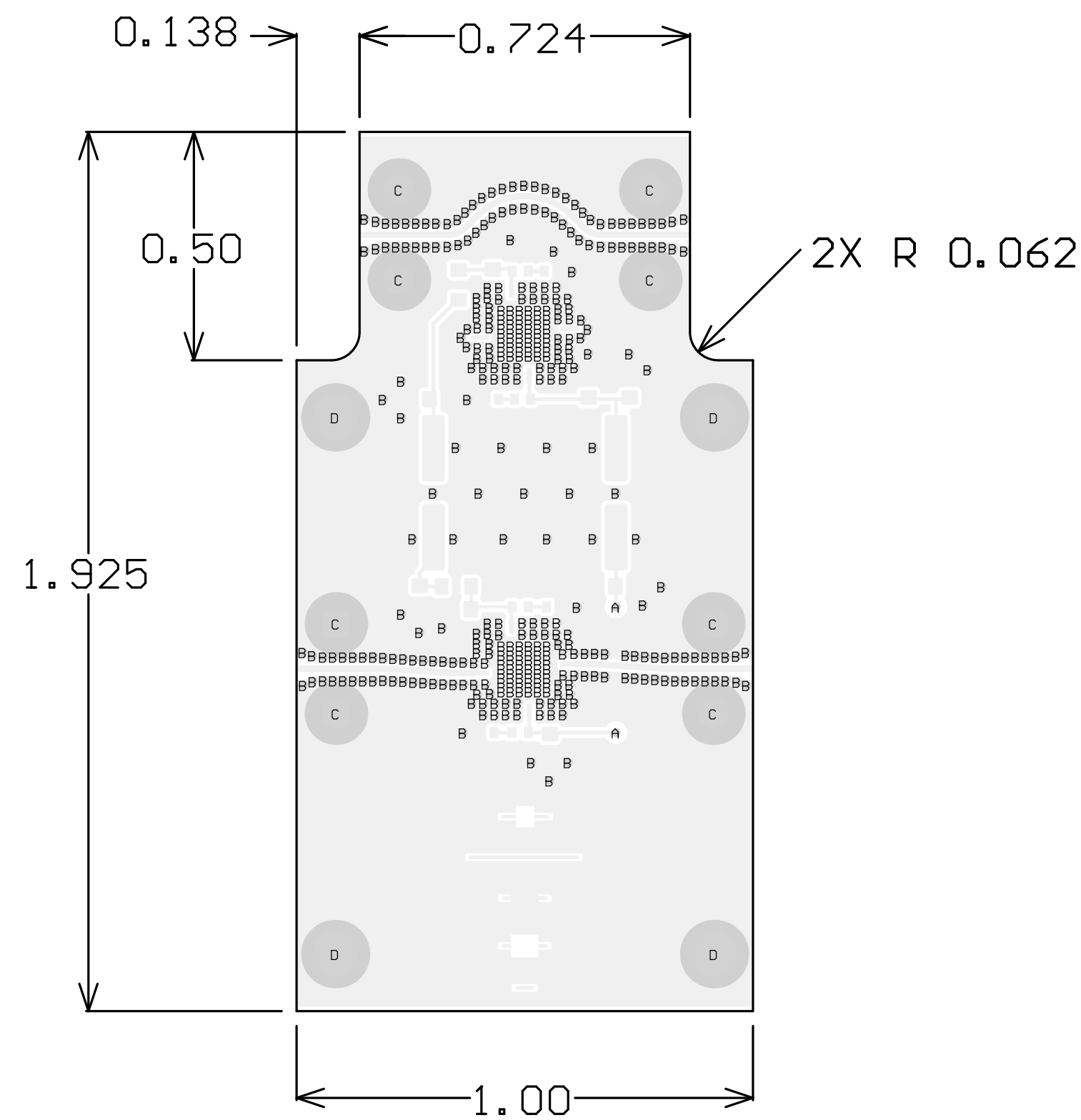
BOARD DIELECTRIC / COPPER STACKUP
FINISHED BOARD THICKNESS
(EXCLUDING PRIMARY SILKSCREEN & SOLDERMASK)



NOTES:

- MATERIAL:
R04003C 8 MIL DIELETRIC THICKNESS AND ISOLA 370HR. SEE DETAIL 'A'.
STARTING COPPER FOIL ON PRIMARY AND SECONDARY LAYERS SHALL BE 1/2 OZ.
COPPER ON PRIMARY AND SECONDARY SHALL BE PLATED UP AN ADDITIONAL 1/2 OZ.
MATERIAL STACKUP, THICKNESS, AND STARTING COPPER FOIL PER DETAIL 'A'.
- FINISH: PRIMARY AND SECONDARY SIDE FINISH;
ELECTROLESS NICKEL/IMMERSION GOLD (ENIG) PER IPC-4552 LATEST REVISION.
THERE SHALL BE NO PITS, PIN HOLES, SCRATCHES OR NODULES WITHIN EXPOSED METAL AREAS
SHALL PASS SOLDERABILITY TESTING PER IPC-J-STD-003 LATEST REVISION.
- PCB SHALL BE FABRICATED PER IPC-6012 CLASS 2 AND CONFORM TO IPC-A-600 CLASS 2 LATEST REVISIONS.
- ALL HOLES TO BE PLATED THRU UNLESS OTHERWISE SPECIFIED.
ALL FINISHED DRILL HOLE SIZES APPLY AFTER PLATING.
COPPER PLATING IN THROUGH HOLES WILL BE 0.001" AVERAGE WITH AN
ABSOLUTE MINIMUM OF 0.0007".
DIMENSIONS SHOWN ARE FOR LOCATION OF 0,0 FOR THE DRILL FILE.
- ALL 10 MIL FHS SHALL BE FILLED WITH CONDUCTIVE MATERIAL, CAPPED OVER, AND PLANARIZE FLAT.
- ALL 9.9 MIL FHS SHALL HAVE HOT VIA REMOVAL OR BACKDRILL OF SECONDARY SIDE PADS.
REMOVAL OF SECONDARY SURFACE CONNECTION SHALL BE ACHIEVED BY EITHER PROCESS.
LAYER 3 INTERCONNECT SHALL BE RETAINED AFTER REMOVAL OF EXTERNAL PAD ON SECONDARY SIDE.
- ELECTRONIC DATA IS EQUAL TO THE FINISHED LINE WIDTH.
- LPI SOLDER MASK COATING SHALL CONFORM TO IPC-SM-840, CLASS T. SMOBC. PRIMARY SIDE ONLY. COLOR GREEN.
- SILKSCREEN ON PRIMARY SIDE SHALL BE WHITE NON-CONDUCTIVE EPOXY INK.
REMOVE ANY SILKSCREEN ON EXPOSED PADS.
- GROUND EDGE PLATING DEFINED BY ARTWORK "EDGE PLATING" (MECHANICAL 9)
SHALL CONNECT GROUND FROM PRIMARY LAYER TO SECONDARY LAYER.
- GROUND FILL SHALL EXTEND TO BOARD EDGES UNLESS OTHERWISE NOTED.
EXPOSED COPPER ON BOARD EDGE SHALL BE ACCEPTABLE.
- MINIMUM LINE WIDTH AND SPACING IS .005", LINE WIDTHS ARE +/-1 MIL.
- LINE WIDTH AND SPACING FOR RF SHOULD BE 14 AND 6.5 MIL.
LINE WIDTH AND SPACING FOR PROBE SHALL BE 8 AND 4.5 MIL.
- SOLDERABILITY SHALL BE IN ACCORDANCE WITH IPC-A-610 CLASS 2.
- ALL MATERIALS DESCRIBED IN THIS DOCUMENT/DRAWING SHALL BE IN COMPLIANCE WITH
AND CONTAIN NO SUBSTANCES RESTRICTED OR REQUIRING SPECIAL RECLAMATION UNDER
THE LATEST RoHS, WEEE OR ELV DIRECTIVES.

Symbol	Hit Count	FHS	Tol.	Plated	Hole Type	Drill Layer Pair
A	2	9.90mil	+3/-9.9mil	PTH	Round	Top Layer - Bottom Layer
B	345	10.00mil	+3/-10mil	PTH	Round	Top Layer - Bottom Layer
C	8	67.00mil	+/- 3mil	PTH	Round	Top Layer - Bottom Layer
D	4	100.00mil	+/- 3mil	PTH	Round	Top Layer - Bottom Layer
	359 Total					



PRIMARY LAYER (PHY 1)

UNLESS OTHERWISE SPECIFIED INTERPRET DRAWING PER ASME Y14.5 DO NOT SCALE THIS DRAWING		UNLESS OTHERWISE SPECIFIED DIMENSIONS ARE IN INCHES		<div>MACOM®</div> <div>WWW.MACOM.COM</div>		
NOTE: THIS DRW INCORPORATES THIRD ANGLE PROJECTION		TOLERANCES ON				
		DECIMALS	ANGLES	TITLE PRINTED BOARD, EVAL, MAAL-011158		
		.X ±.1 .XX ±.02 .XXX ±.005 .XXXX ±.0005	±0.5			
MACOM Technology Solutions CONFIDENTIAL INFORMATION SUBJECT TO NDA		UNLESS OTHERWISE SPECIFIED 63/ ALL OVER		SIZE	DRAWING NO.	REVISION
<p>The information contained in this document or material is the valuable and confidential property of MACOM Technology Solutions Holdings, Inc. and/or its subsidiaries or affiliates. Collectively, MACOM. Provided to you subject to a non-disclosure agreement between you and MACOM solely for use in supporting MACOM's business as and to the extent MACOM authorizes in writing from time to time. This information shall be held in strictest confidence and shall not be reproduced, published, disclosed to others, or used for any purpose except as and to the extent specifically authorized by MACOM in a separate written agreement. Permission is granted for reproduction, this legend must be included in any and all copies. This document or material shall be promptly returned to MACOM or destroyed upon request, completion of the use for which it was made available to recipient, or termination of MACOM's relationship with recipient, whichever first occurs.</p>		MATERIAL	X	B	PT-0034268	A
		FINISH	X	SCALE:	1/1	PACKAGE TYPE: